



GDI-1 Polyclonal Antibody

Catalog No	YP-Ab-16259
Isotype	IgG
Reactivity	Human;Mouse;Rat
Applications	WB;ELISA
Gene Name	GDI1
Protein Name	Rab GDP dissociation inhibitor alpha
Immunogen	The antiserum was produced against synthesized peptide derived from human GDI-1. AA range:394-443
Specificity	GDI-1 Polyclonal Antibody detects endogenous levels of GDI-1 protein.
Formulation	Liquid in PBS containing 50% glycerol, 0.5% BSA and 0.02% sodium azide.
Source	Polyclonal, Rabbit,IgG
Purification	The antibody was affinity-purified from rabbit antiserum by affinity-chromatography using epitope-specific immunogen.
Dilution	Western Blot: 1/500 - 1/2000. ELISA: 1/20000. Not yet tested in other applications.
Concentration	1 mg/ml
Purity	≥90%
Storage Stability	-20°C/1 year
Synonyms	GDI1; GDIL; OPHN2; RABGDIA; XAP4; Rab GDP dissociation inhibitor alpha; Rab GDI alpha; Guanosine diphosphate dissociation inhibitor 1; GDI-1; Oligophrenin-2; Protein XAP-4
Observed Band	50kD
Cell Pathway	Cytoplasm . Golgi apparatus, trans-Golgi network .
Tissue Specificity	Brain; predominant in neural and sensory tissues.
Function	disease:Defects in GDI1 are the cause of mental retardation X-linked type 41 (MRX41) [MIM:300104]. Mental retardation is characterized by significantly sub-average general intellectual functioning associated with impairments in adaptative behavior and manifested during the developmental period. Non-syndromic mental retardation patients do not manifest other clinical signs.,disease:Defects in GDI1 are the cause of mental retardation X-linked type 48 (MRX48) [MIM:300104]; also known as MRX3.,function:Regulates the GDP/GTP exchange reaction of most Rab proteins by inhibiting the dissociation of GDP from them, and the subsequent binding of GTP to them.,similarity:Belongs to the Rab GDI family.,tissue specificity:Brain; predominant in neural and sensory tissues.,



Background

GDP dissociation inhibitors are proteins that regulate the GDP-GTP exchange reaction of members of the rab family, small GTP-binding proteins of the ras superfamily, that are involved in vesicular trafficking of molecules between cellular organelles. GDIs slow the rate of dissociation of GDP from rab proteins and release GDP from membrane-bound rabs. GDI1 is expressed primarily in neural and sensory tissues. Mutations in GDI1 have been linked to X-linked nonspecific mental retardation. [provided by RefSeq, Jul 2008],

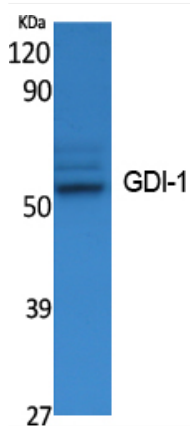
matters needing attention

Avoid repeated freezing and thawing!

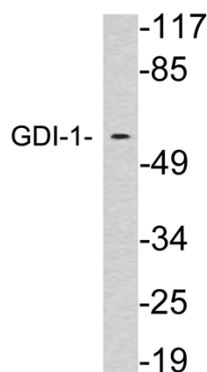
Usage suggestions

This product can be used in immunological reaction related experiments. For more information, please consult technical personnel.

Products Images



Western Blot analysis of extracts from K562 cells, using GDI-1 Polyclonal Antibody. Secondary antibody(catalog#:RS0002) was diluted at 1:20000



Western blot analysis of lysates from brain tissue, using GDI-1 antibody.